



NCL

The

Secure
Network
Services &
Infrastructure

Service Catalogue:

Network (Wired/ Wireless) **Infrastructure**

A cutting-edge network infrastructure is more than just an asset; it's the essential backbone of a thriving and competitive organisation. Our advanced wired and wireless networking design and implementation tools utilise the latest in AI-technology, protecting both medium and large enterprises alike.

Harness the power of the latest next-generation switch routing and WiFi tools by seamlessly deploying our most advanced network solutions. Carry confidence and peace-of-mind with our tailor-crafted technology, that upgrades your network to defend against the most sophisticated threats.



NCL

DRIVING DIGITAL VIGILANCE

Network (Wired/ Wireless)

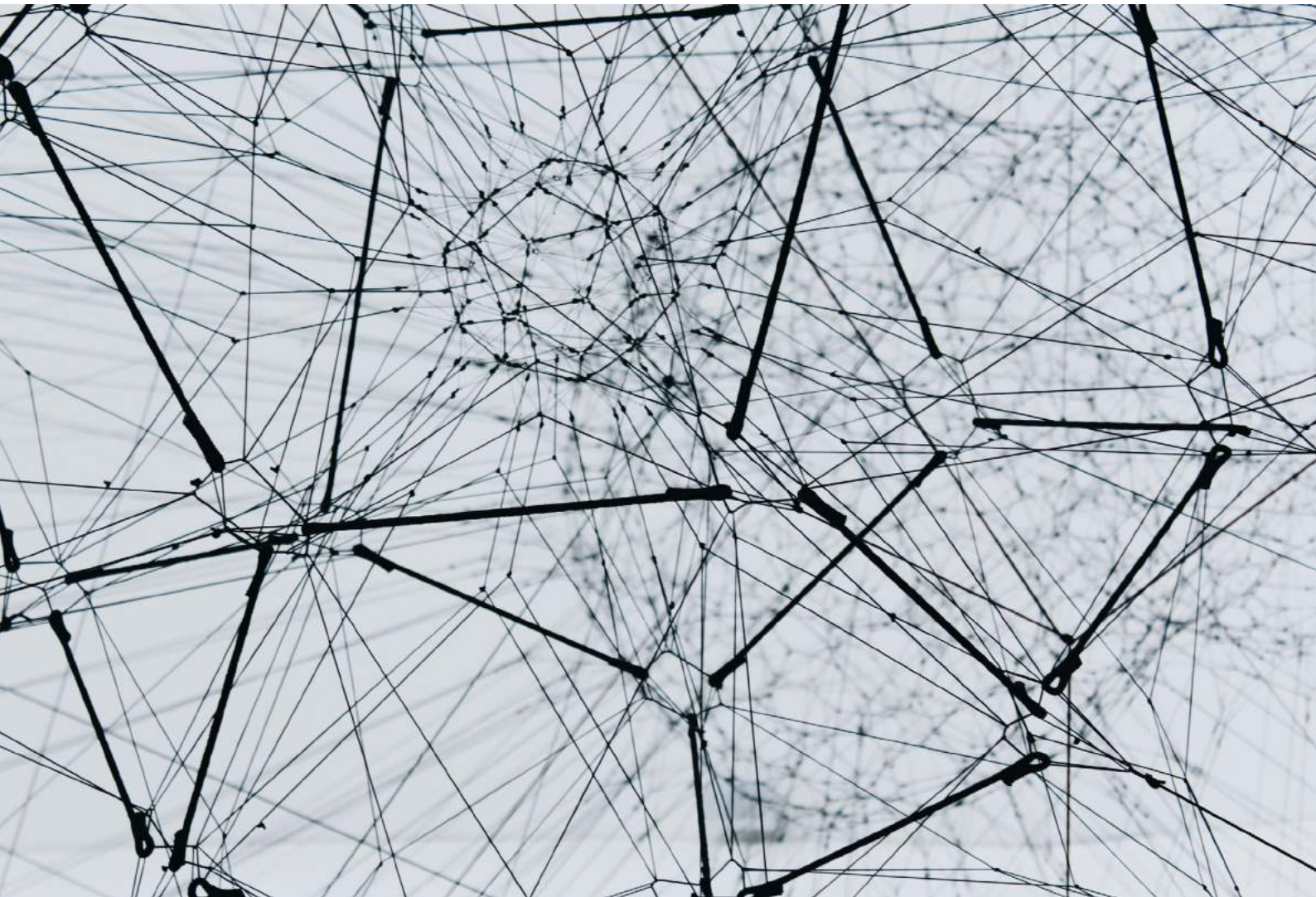
Infrastructure

A state-of-the-art and robust network infrastructure is the backbone of any successful enterprise. It's the digital highway that connects every facet of your organisation, enabling seamless communication, data sharing, and innovation. It also provides a solid foundation for implementing cutting-edge technologies, safeguarding sensitive data, and ensuring a competitive edge in an increasingly digital world. In essence, investing in the best network infrastructure isn't just a choice; it's a strategic imperative for sustainable growth and success.

At NCL, we deploy, configure and integrate switches, routers and access points, tailored to your needs. Whether you're running a local or wide area network infrastructure, we consolidate everything seamlessly within your organisation. Once it's all set up, we actively stay involved. We will review, detect and react to any and all threats, focus on maintaining your network with best practices, and update in accordance with your evolving business requirements.

Here's the step-by-step process of our Network Infrastructure Design Implementation:

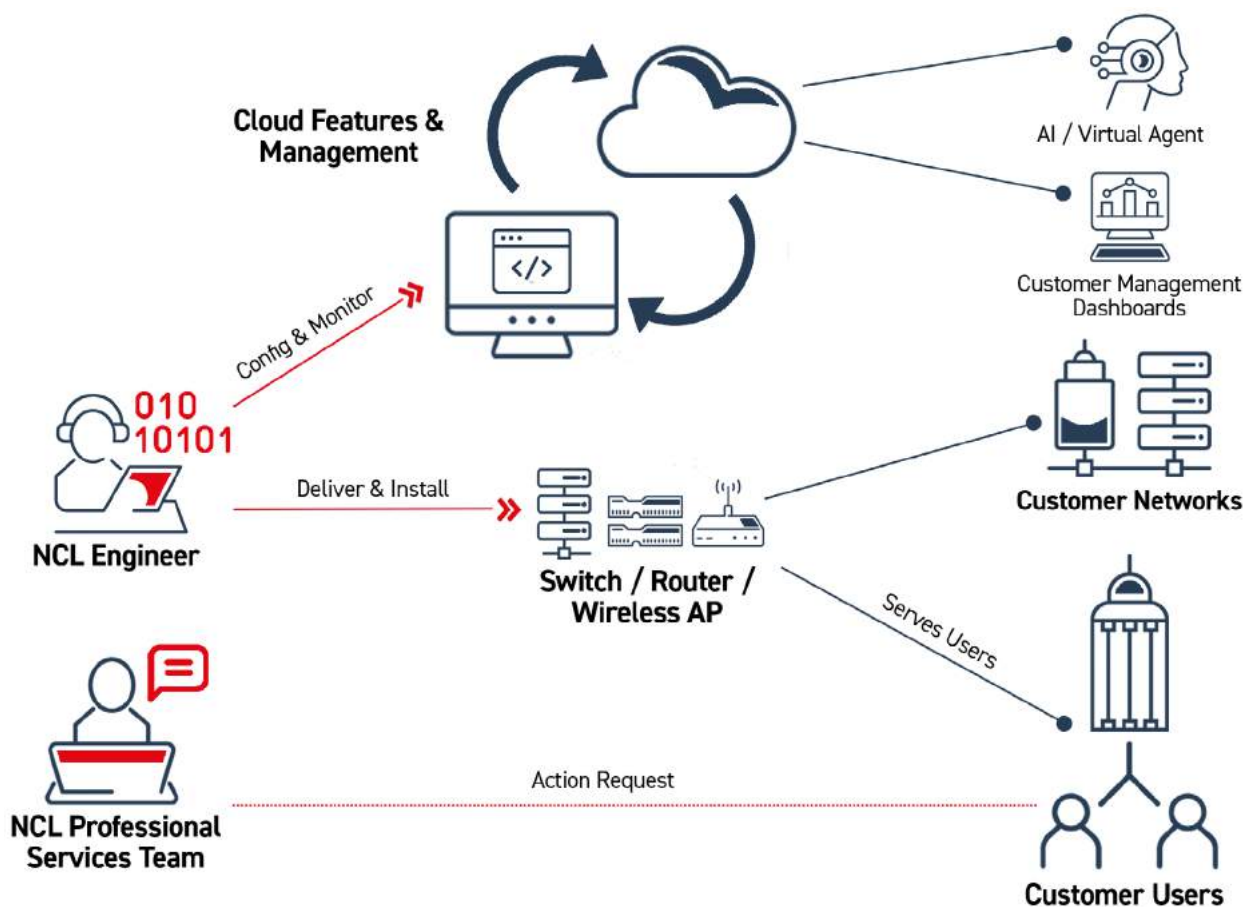
- Deployment of switches, routers and access points
- Configure cloud-based dashboards and advanced functions
- Integration with customer systems (networks, ID providers, and multi-cloud solutions)
- Highlight cost-effective treatments
- Generate reports, at any desired frequency/ level of analysis
- Configure policies for new apps/ services on-demand, while detecting and reacting to threats
- Continual best-practice review with potential expansion of devices/ users/ networks



Service Architecture

Our secure network (LAN/ WiFi) infrastructure tools are based on the following components:

- Routers
- Switches
- Physical cabling
- Wireless Access Points
- Cloud management/ visibility portal



Service value tailored to your needs

- **Elevate productivity** and user access by transitioning from command line to an **intuitive graphical interface**, simplifying network configuration for faster changes.
- Deploy equipment quickly and facilitate **streamlined management** with pre-designed templates, **enhancing efficiency** and ease of maintenance
- Empower junior staff to **rapidly deploy capabilities** by leveraging the expertise of senior colleagues who can create effective configurations using templates, effectively **reducing operational costs**
- Boost system availability and **cut operational costs with AI-driven** automated troubleshooting and maintenance
- **Accelerate the on-boarding process** for new network staff and safeguard against single points of failure in staff knowledge by providing a centralised graphical portal that **simplifies network management** and understanding.

Optional add-ons

Additional call-off time for project or ongoing implementation is possible for the following:

- Asset tracking
- Premium analytics
- AI virtual agent
- WAN/ WiFi assurance
- Network configuration & Design

We're happy to discuss your specific situation, understand your challenges and advise on the best ways of defend against the most sophisticated network threats. Maximising your business value starts with the click of a button.



Net Consulting gave us peace of mind implementing a new state-of-the-art network to overhaul our security transformation.

IT Director

HUGH | JAMES



Sound good? Then let's chat >>>

+44 (0)292 097 2020
sales@netconsulting.co.uk



NCL

**DRIVING
DIGITAL
VIGILANCE**